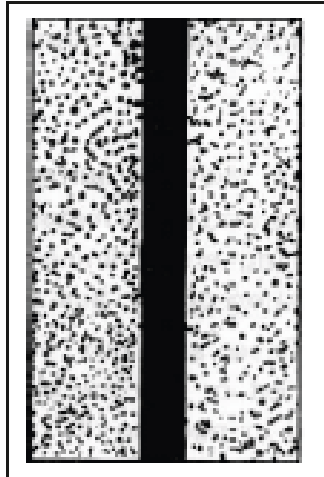
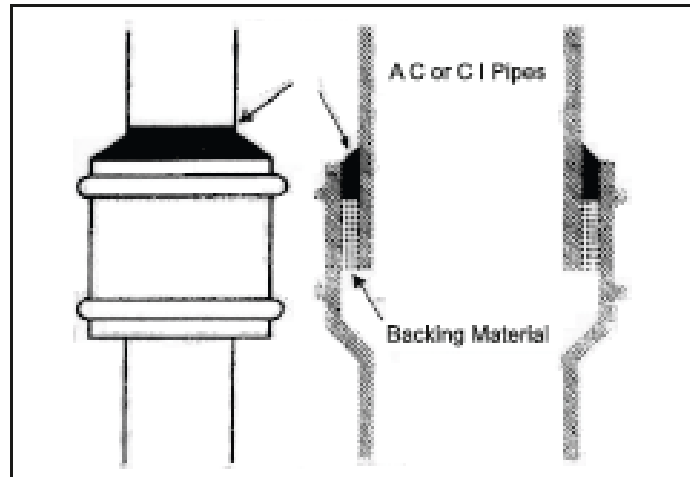


# POLYSEAL SEALANTS

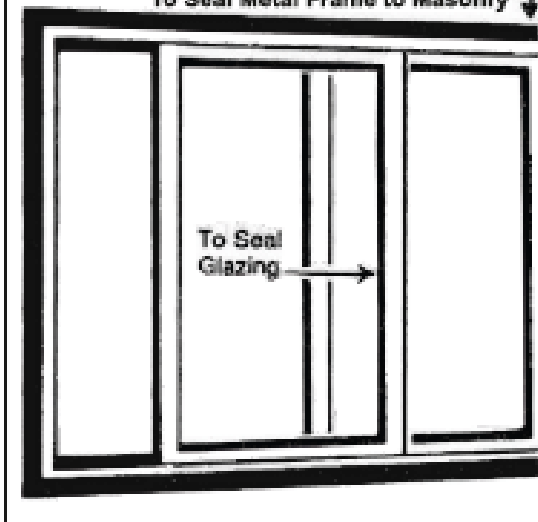
Expansion and Construction Joints



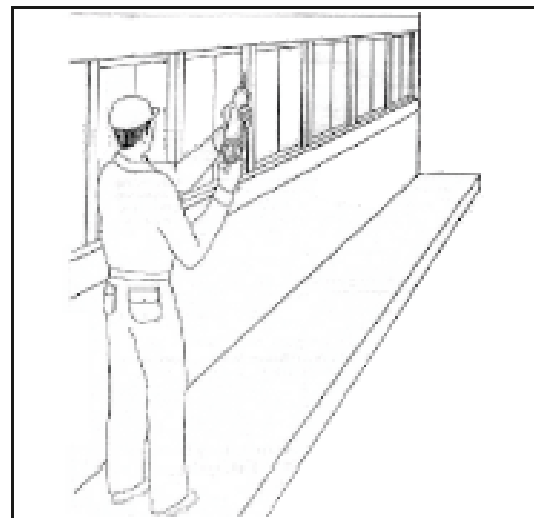
Permanent A.C. or C. I. Pipe Joints



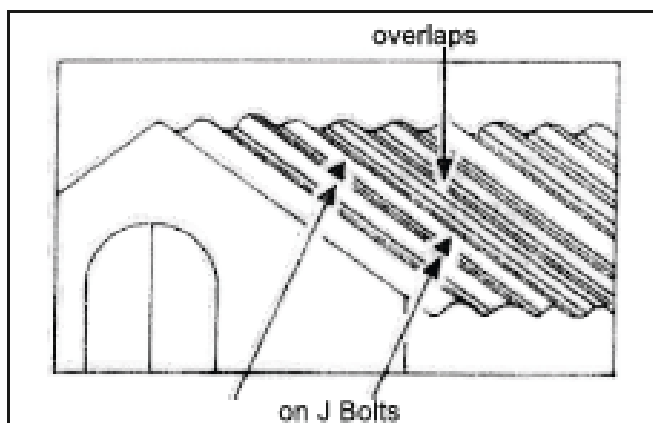
To Seal Metal Frame to Masonry



To Seal Glazing



All Type of Windows & Doors



Corrugated A. C. & Metal Roofs

## IMPORTANT NOTE

### INSTRUCTIONS FOR FILLING CRACKS OR EXPANSION JOINTS IN CONCRETE WITH POLYSEAL

1. In general, for gaps upto 1/2" width, the joint should be designed so as to have equal width and depth. For larger width of joint the depth should be made about half the width. A backing release type of strip should be used in all grooves. This may be a plain Polythene Sheet cut into strips, Polythene Foam or Polyurethane Foam, depending on the design of the groove, (Please refer back to us for more detailed information, if required).

#### 2. Surface Preparation

It is very important, in using this material, to ensure that the surfaces are smooth, clean, dry and firm. All moisture, oil, grease and loose material must be removed by means of solvents, wire brushing etc. Priming of all surfaces must also be carried out before application of the Sealant.

3 Drop the Black Catalyst into the white Rubber Base and mix very thoroughly by means of a flat steel strip or a large rod or a screwdriver until the colour is uniform, The material is supplied in packing of 2.76 kgs. Base and 0.24 kgs. Black Catalyst, If it is desired to mix smaller batchss, this can be accomplished by mixing in the approximate ratio of 10 : 1 or 11 : 1 by weight or by volume. The proportions are not very critical and can be judged approximately e. g. you can take half the contents of the tin of white Based material and half contents of the Back Catalyst tin or 1/4 + 1/4 and mix them in a separate vessel till the colour is quite uniform, without any streaks,

4. Prime the concrete surfaces which will be in contact with the "POLYSEAL"

before hand, say, 2/3 mins before mixing up the "POLYSEAL" When the primer is dried or almost dried, fill the groove with Polysealmixutre upto the top along the whole length of the groove. This application can be done by means of a spatula or any fiat strip of metal, plastic, wood etc. Masking tape may be used on the side for a good finish.

#### 6. Levelling and Consolidation

This is a very important step, for good adhesion and performance but is frequently neglected. Take a small quantity of very strong soap solution and wet the figers with it and pass along the top surface with gentle pressure to give a polishing action. This will serve to

a) Press the Polysulphide firmly against the side of the concrete surfaces giving good adhesion.

AND

b) Will give a good surface finish to the "POLYSEAL"

Leave the groove in this condition for atleast 8/10 hours, to set.